



# Wanstead High School Sixth Form

Education with Character



## Prospectus



## Welcome to Wanstead High School

Thank you for showing an interest in this amazing local school. Wanstead High School is a thriving 11-18 comprehensive school in the heart of the community. Our mission is to deliver high quality education with character to every single young person who comes here. Our staff are totally committed to doing the best for pupils and, in return, pupils are keen to succeed, resulting in excellent exam results and other personal milestones such as trips abroad, performances and many career opportunities.

It is always rewarding to see our post-16 pupils having an impact on the wider school by taking part in the social contract, performing in assemblies or acting in a school play. The key to successful post-16 education is to offer a broad and balanced curriculum, consistently taught well by subject specialists, that allows all pupils to follow the most ambitious pathways to suit their talents and dreams. That's what Wanstead High School does so well! We are also equipping our pupils with enquiring minds and instilling strong positive values that will help them to thrive and succeed in the future. Our outcomes in 2024-25 put us right at the top of the local non-selective schools and in the top 10% of schools for value-added progress (ALPS).

We provide a very strong core of traditional subjects at A Level, as well as a huge breadth of additional choice, including the opportunity to follow Media, Classics, Dance, PE and Photography, with amazing facilities across the school, including well-equipped science labs and sports facilities. The Dance, Music and Drama provision is second to none and the regular performances are outstanding in every way. In addition to learning in the classroom, our pupils also have access to a wide spectrum of extra-curricular activities from excellent sports and school clubs, through to trips, including opportunities to travel abroad.

The Sixth Form has a purpose-built building which provides space for independent and supervised study which is a great asset and we are looking to further re-develop this including the consideration of improved IT facilities. We are also hugely excited about the new building and swimming pool which should be open by September 2026. We are committed to providing the very best for the young people in our care, and I hope that this prospectus opens up a little bit about what makes Wanstead High special.

I am very proud to be the Headteacher of this school. I have a teenage daughter myself and she drives me to ensure that the education we provide is second to none. She is currently in a local Redbridge Sixth Form. If I wasn't here, it would have been her first choice and mine too but we were not quite ready to be in the same building as me all day! I want every opportunity for her and I want every opportunity for your children too. Please do take the opportunity to visit the school – our pupils and staff are the very best advertisement for Wanstead High. I look forward to meeting you.

Emma Hillman - Headteacher



At Wanstead High, we aim to raise expectations and ensure that each and every pupil in our care achieves highly and leaves school well-educated and qualified.

We want every pupil in the school to be successful, and this means that they should be working towards achieving or exceeding attainment targets. Not everyone can achieve the same academic standard, but all pupils can give their best, accept challenge and do what we ask of them. In this respect, a condition of being part of the Sixth Form is that pupils maintain excellent records of attendance and complete all assignments, homework, assessments and tasks on time and to the best of their ability.

The Wanstead High School Sixth Form dress code encourages our pupils to develop maturity and a business-like approach to their studies. We expect a rigorous adherence to the dress code in the same way we expect the highest standards with respect to learning both inside and outside the classroom.

## Aspiring for Excellence

### Our Vision:

*We will provide high quality education with character: inspiring our young people, keeping them safe, and preparing them fully for life in the modern world.*

*“Wanstead High School expects its pupils to be ‘ready, respectful and responsible’. Pupils put these guiding principles into action through their positive attitudes in lessons and around school. Staff have high expectations for pupils’ achievements and wider success. Pupils are confident and articulate learners who listen and express their views with thought and consideration”.*  
**Ofsted 2025**

# Standards and Expectations







“Within my first few months here, I have already been able to tell why the students are able to achieve such good grades, as the system and teachers here are incredibly helpful”. **External Year 12 Pupil 2025**

“The teachers have a very effective method of teaching that has helped me a lot”.  
**Year 12 Pupil 2023**

Our teachers work in partnership with our pupils to ensure they achieve their full potential.

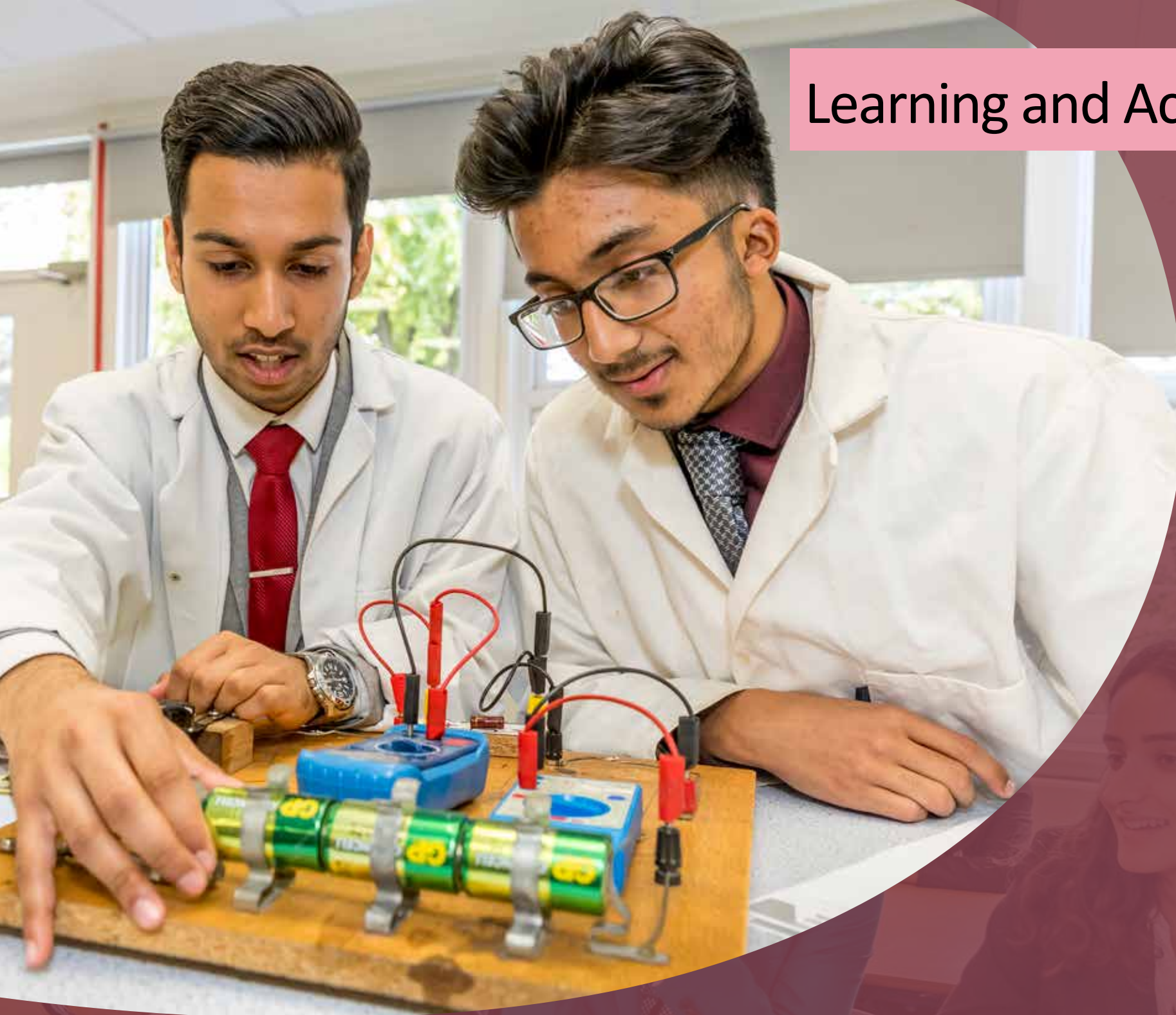
All Sixth Form pupils will be expected to be committed to their studies and be prepared to take responsibility for much of their learning outside of the classroom, supported by their personal tutor and subject teachers. This develops the skills that pupils need to make excellent progress and prepares them for progression to further or higher education and into their chosen career. Pupils have periods dedicated to independent and supervised study and can earn the right to home study over the two years.

*“Teachers have strong subject knowledge. They present learning clearly, select appropriate activities and ensure that pupils use vocabulary correctly.”*

**Ofsted 2025**

“My A-Level subjects give me life-long knowledge that will be useful in the real world”.  
**Year 13 Pupil 2024**

# Learning and Achievement





# Subjects and Curriculum





Our Sixth Form offers a broad curriculum and a wide range of A Level subjects designed to meet the needs of a broad spectrum of pupils. Information on our programmes of study and entry requirements are given in our course options brochure.

There are a number of important decisions to be made before making your final subject choices. When trying to decide, think about the abilities and skills the course demands and whether you will find the subject interesting.

Do you need the subject in order to follow a chosen career path or university course? How well are you doing in Year 11? Are you reaching your potential? Your GCSE results and the point score calculated from them heavily influences which courses will be open to you.

We expect you to commit to fulfilling your true potential and in return you can expect from us subject expertise delivered in an innovative and exciting way, together with a strong pastoral support programme to help and guide you through the Sixth Form and beyond.

We can offer you a wide-ranging enrichment programme to broaden your experience and guidance, and support as you choose university courses and consider your career choices. We believe that academic monitoring and tracking is vital to ensure steady and impressive progress and we will show a dedication to ensuring you reach your goals.

*"In the sixth form, students demonstrate high levels of concentration and commitment to their learning." Ofsted 2025*

**“The education I receive at Wanstead High School Sixth Form is excellent. The teachers are outstanding; their attentiveness to the well-being of their students is something that is very difficult to find anywhere else. They really care”.**

**“The subjects I take have great departments. I have teachers I know I can trust and go to for any issues”. Year 12 Pupils 2025**



“It was very important for me to find a school that would nurture my creativity while also helping me grow academically.” **Year 12 Pupil 2025**

“Teachers help us to remember through 'quiz questions and do nows' and curriculum lists and checklist” **Year 13 Pupil 2024**

We offer a wide range of traditional subjects, as well as a variety of other interesting courses such as Classics, Media, Sociology, Dance and Photography. In the Arts, many former pupils move on to study related courses at university and other higher education institutions. Pupils can learn a musical instrument, join drama, dance and music groups or use music practise rooms. There is a broad mix of musical ensembles in the school including an orchestra, jazz band and choir. Whole school productions take place throughout the year, including at least one drama production, a number of music concerts and performing arts celebration evenings.

Curriculum enrichment broadens and deepens pupils' experience in the Sixth Form. Regular study visits are arranged by most departments from Art trips to Geography fieldwork and opportunities to go abroad. This year, there are trips planned to France, Barcelona and Rome. Drama pupils are regular attenders at top-class theatrical productions in the West End.

All pupils follow a social contract that means they volunteer in the school to support the wider community.

*“Most pupils describe the school as a place that is ‘not just about achieving well, but also about building our characters’. They revel in taking part in the wide range of activities and opportunities that enhance their experience of school life”.* **Ofsted 2025**





# Enrichment and Creativity





# Support and Guidance







**“Unifrog has helped me so much to consider different options and will help me make the right choices”.**

**Year 12 Pupil 2022**

**“As an early applicant, I felt so supported by my Head of Year and the pastoral team when applying through UCAS. I was lucky enough to have multiple workshops and sessions to tweak my personal statement so that I feel truly confident sending it off!”.**

**Year 13 Pupil 2022**

The Sixth Form team are accessible to pupils on a daily basis in the Sixth Form centre, their key role being to ensure that all pupils receive the support and guidance they need to achieve their best.

Sixth Form pupils are arranged into tutor groups with a form tutor who plays a key role in making sure each pupil is able to meet our agreed standards and expectations. Tutors meet pupils regularly to review progress and set targets which will enable you to reflect on learning and ensure pupils achieve their full potential.

Our UCAS advisor can offer expert help and guidance about future study and university choices in order to help you pursue a future that offers challenge, stimulation and economic security in an increasingly competitive world. All pupils have access to Unifrog – an online programme that helps pupils to make the best choices about next steps, submit the strongest applications and take part in Work Experience in Year 12.

In essence, there is always someone to provide guidance to both parents and pupils and a helping hand when needed to ensure pupils achieve their best.

**“Good careers advice and guidance help pupils to make informed and sensible choices about their future study and employment”.** **Ofsted.**





“I chose Wanstead because I knew I would get more than just an exam-taking institution. I knew I would come out with opportunities to enrich myself and help me become a well-rounded student, not just another grade on the wall. I have been able to continue my extracurriculars such as music and have made new friends (both internal and external). The school has been extremely welcoming to all students”.

**Year 12 Pupil 2025**

With such a wide range of subjects available, it is important to take time to choose the right options for Sixth Form study. Consider what you enjoy, where you thrive academically, and which subjects best support your future goals. Motivation and engagement are key; pupils who choose subjects they find stimulating and rewarding tend to achieve the strongest results at A Level.

Some university courses require specific A Level subjects, while others offer greater flexibility. Research is therefore essential: selecting the wrong combination of subjects could limit your future choices at university or within certain career pathways.

If you are considering applying to a Russell Group university or other competitive institution, consult the Russell Group's 'Informed Choices' guidance. It outlines which A Level subjects are commonly required or preferred for specific degree courses and offers advice on subject combinations that keep your options open.

Once you have chosen your subjects, applications should be submitted in line with the published guidance for that academic year. This process includes an academic reference from your current school confirming your suitability for the chosen courses. Once your application has been reviewed and the programme deemed appropriate, you will be invited to a meeting to discuss your options. Formal offer letters will then be issued, confirming whether you have been offered a conditional place, subject to your GCSE results.

In 2025, 55% of our pupils attending higher education went to a Russell Group university.

“The school ensures that sixth-form students are well informed about their next steps, such as university and apprenticeship opportunities”. **Ofsted 2025**

*“I'm contacting you firstly to express how grateful we are to Wanstead School for helping my child get into Oxford - we really appreciate the commitment of teachers and WHS staff”.* **Parent 2022**

“Throughout my year and a half at this sixth form, not only have I felt at home by the welcoming team, but also supported through my UCAS and Oxbridge preparation”.

**Year 13 Pupil 2023**



# Making choices for success







**“The Sixth Form has a welcoming environment that makes it easy to settle in and feel comfortable”.**  
**Year 12 Pupil 2023**

Our purpose-built Sixth Form centre offers excellent facilities. It includes a large supervised quiet study room complete with a computer suite and canteen and common room (which operates as an 'open study' room during lesson times) all of which are available for the exclusive use of our sixth form pupils.

The School Library is used by sixth form pupils for research, study and wider reading. It has a comprehensive range of reading material for all subjects, PCs and laptops and a dedicated fulltime librarian on hand for advice.

**“Thank you all for your wonderful support and making Wanstead such an inclusive school”.**  
**Parent Communication 2024**

## Facilities









# Wanstead High School

---

Education with Character

Redbridge Lane West, Wanstead, London E11 2JZ

Tel: 020 8989 2791

Email: [whs@wansteadhigh.co.uk](mailto:whs@wansteadhigh.co.uk)

[www.wansteadhigh.co.uk](http://www.wansteadhigh.co.uk)